



Patients prefer
AIR OPTIX™ for ASTIGMATISM

over **SofLens66® Toric**¹

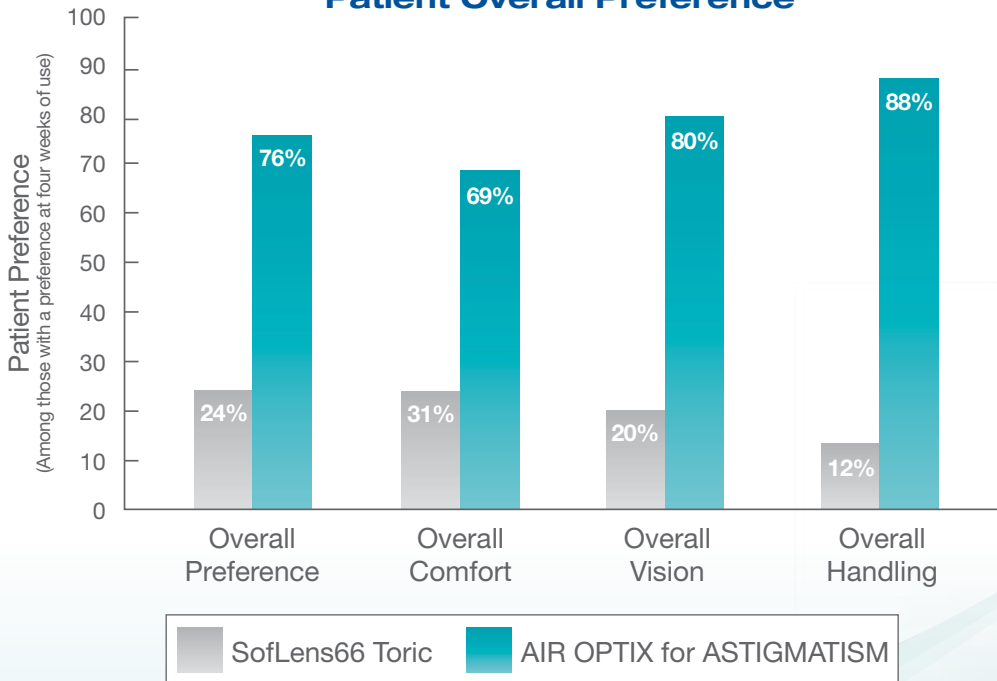


Breakthrough design makes the difference

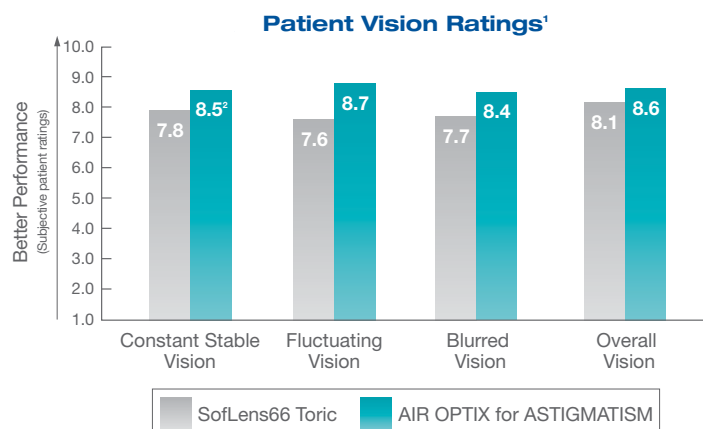
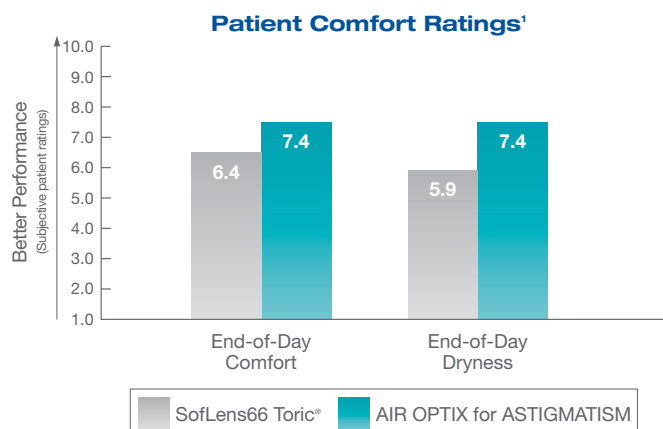
AIR OPTIX for ASTIGMATISM lenses provide excellent stability to achieve a 95% first lens fit success rate:^{2,3} With its new Precision Balance 8|4™ design, AIR OPTIX for ASTIGMATISM delivers outstanding performance compared to SofLens66 Toric.

Overall, patients prefer AIR OPTIX for ASTIGMATISM

Patient Overall Preference¹

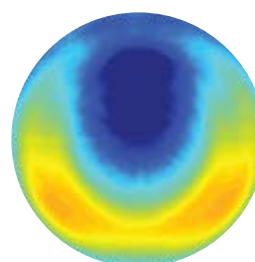
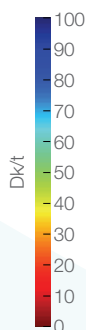


Studies show higher patient ratings for AIR OPTIX™ for ASTIGMATISM



Up to 7x higher oxygen transmissibility⁴

AIR OPTIX for ASTIGMATISM transmits up to 7x more oxygen than SofLens66 Toric.



AIR OPTIX for ASTIGMATISM
Dk/t = 108 @ -3.00D
-1.25D x 180



SofLens66 Toric
Dk/t = 16 @ -3.00D
-1.25D x 180

	Material	% Water Content	Dk	CT	Dk/t
SofLens66 Toric	alphafilcon A	66	32	0.195	16.4
AIR OPTIX for ASTIGMATISM	lotrafilcon B	33	110	0.102	108

Easy to refit from SofLens66 Toric

AIR OPTIX for ASTIGMATISM offers a simple, predictable fit, and is easy to refit from other toric lenses, including SofLens66 Toric. To obtain 95% first-fit success, simply take the patient's spectacle Rx and select the appropriate lens from the **Spectacle to Lens Power Grid**, as appears in the Lens Fitting Guidelines.

Visit airoptix.com to learn more, or call your CIBA VISION sales representative at 1-800-241-5999 or your authorized CAN DO distributor.

Rx only *AIR OPTIX for ASTIGMATISM (lotrafilcon B) Dk/t = 108 @ -3.00, -1.25D x 180. Other factors may impact eye health. SofLens66 is a registered trademark of Bausch & Lomb, Inc.

Important information for AIR OPTIX for ASTIGMATISM: For daily wear or up to 6 nights extended wear for near/far-sightedness and astigmatism. Risk of serious eye problems (i.e., corneal ulcer) is greater for extended wear. In rare cases, loss of vision may result. Side effects like discomfort, mild burning or stinging may occur. References: 1. CIBA VISION data on file, 2005. 2. CIBA VISION data on file, 2005. 3. CIBA VISION data on file, 2005. 4. Calculations based on values in *Tyler's Quarterly* – December 2006.