



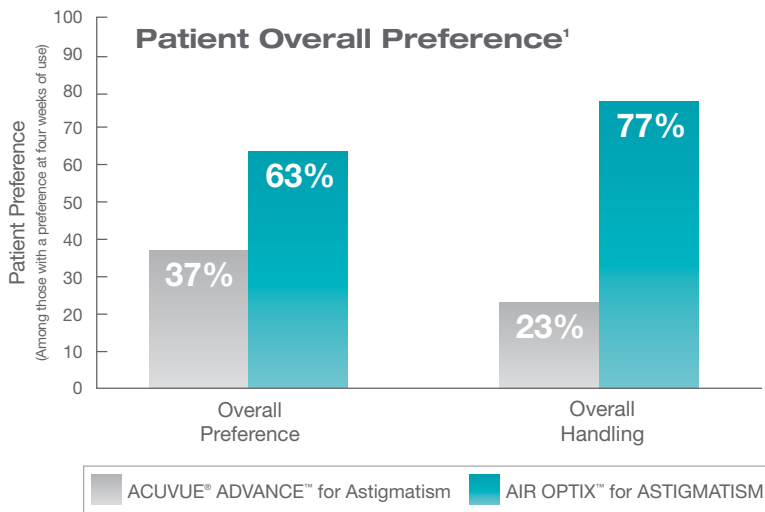
Patients Prefer AIR OPTIX® for ASTIGMATISM

over ACUVUE® ADVANCE™ for Astigmatism¹



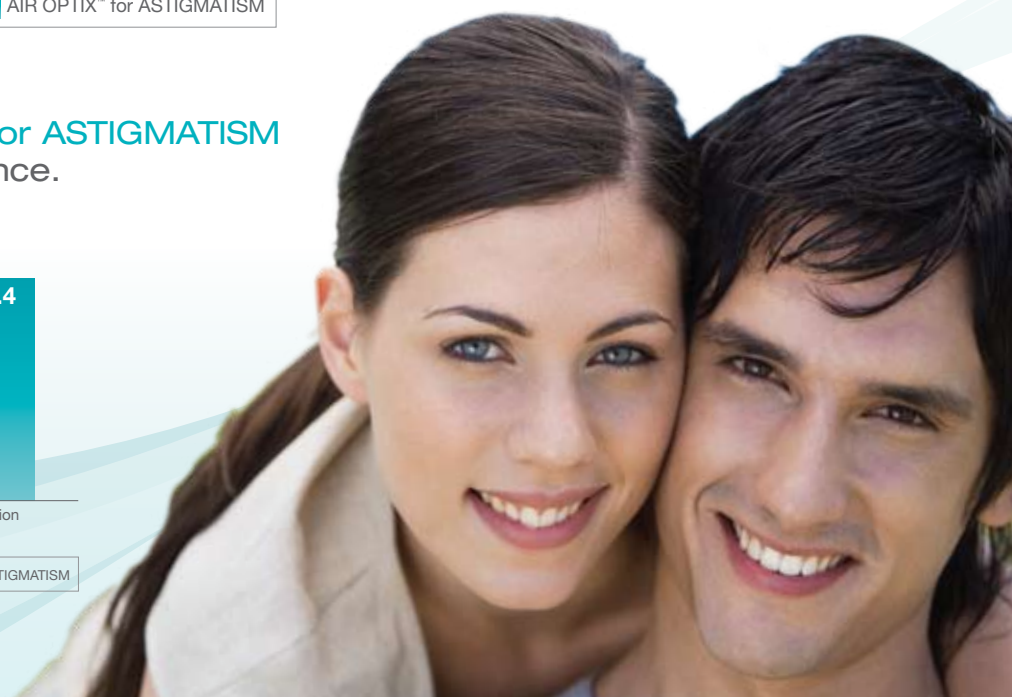
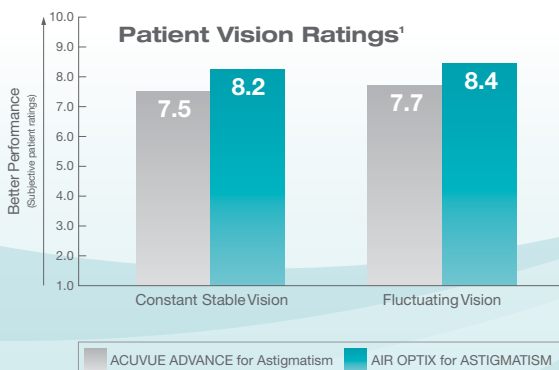
Breakthrough design makes the difference

AIR OPTIX for ASTIGMATISM lenses provide excellent stability to achieve a 95% first lens fit success rate.^{2,3} With its new Precision Balance 8|4™ design, AIR OPTIX for ASTIGMATISM delivers outstanding performance.



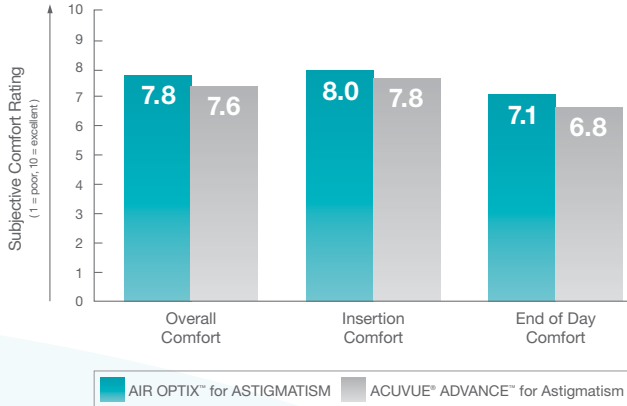
Studies show patients prefer **AIR OPTIX for ASTIGMATISM** over ACUVUE ADVANCE for Astigmatism.

Patients rate **AIR OPTIX for ASTIGMATISM** higher for vision performance.



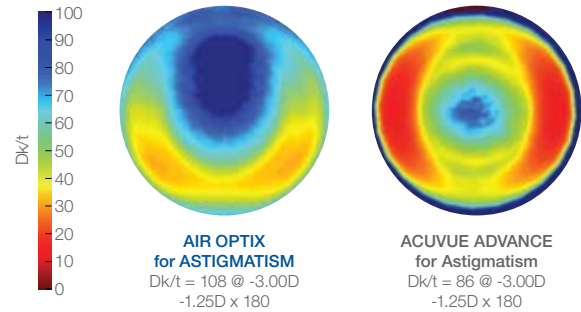
Unsurpassed comfort throughout the day

AIR OPTIX® for ASTIGMATISM delivers unsurpassed comfort compared to ACUVUE® ADVANCE™ for Astigmatism.¹



Up to 25% higher oxygen transmissibility⁴

AIR OPTIX for ASTIGMATISM transmits up to 25% more oxygen than ACUVUE ADVANCE for Astigmatism.*

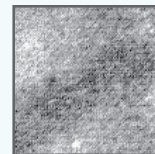


	Material	% Water Content	Dk	CT	Dk/t	Approved Wearing Schedule
ACUVUE ADVANCE for Astigmatism	galyfilcon A	47	60	0.070	86	DW only
AIR OPTIX for ASTIGMATISM	lotrafilcon B	33	110	0.102	108	DW and up to 6 nights EW

Patented surface treatment contributes to healthy lens wear^{5*}

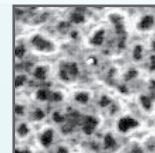
AIR OPTIX lenses:

- Feature a patented, permanent, biocompatible plasma surface treatment
- Resist deposits
- Offer excellent wettability⁶



AIR OPTIX

A permanent, chemically bonded plasma treatment for a smooth, continuous surface⁷



ACUVUE ADVANCE

No permanent plasma treatment and an uneven surface⁷

Easy to refit

AIR OPTIX for ASTIGMATISM offers a simple, predictable fit, and is easy to refit from other toric lenses, including ACUVUE ADVANCE for Astigmatism. To obtain 95% first-fit success, simply take the patient's spectacle Rx and select the appropriate lens from the **Spectacle to Lens Power Grid**, as appears in the Lens Fitting Guidelines.

Visit airoptix.com to learn more, or call your CIBA VISION sales representative at 1-800-241-5999 or your authorized CAN DO distributor.



*AIR OPTIX for ASTIGMATISM (lotrafilcon B) Dk/t = 108 @ -3.00, -1.25D x 180. Other factors may impact eye health. ACUVUE is a registered trademark and ADVANCE is a trademark of Johnson & Johnson Vision Care, Inc.



Important information for AIR OPTIX for ASTIGMATISM: For daily wear or up to 6 nights extended wear for near/far-sightedness and astigmatism. Risk of serious eye problems (i.e., corneal ulcer) is greater for extended wear. In rare cases, loss of vision may result. Side effects like discomfort, mild burning or stinging may occur.

References: 1. CIBA VISION data on file, 2006. 2. CIBA VISION data on file, 2005. 3. CIBA VISION data on file, 2005. 4. Calculations based on values in *Tyler's Quarterly* - December 2006. 5. CIBA VISION data on file, 2005. 6. CIBA VISION data on file, 2006. 7. AFM contact mode. 5 x 5 micron resolution. Sphere lenses. CIBA VISION data on file, 2006.